

Tel: 01603 782520

[www.hovetonstjohn.co.uk](http://www.hovetonstjohn.co.uk)

# St John's Community Primary School and Nursery



## Weekly Newsletter 20th September 2024

Dear parents,

As we finish our second full week back at school I am delighted to say how well everyone is doing.

I would like to take this opportunity to say a massive thank you to everyone that is arriving at school on time every day, ready to learn. Please be aware school starts at 8.40am when the whistle goes. We are asking that children are left to line up on the playground without adults to ensure we can see the lines and send them into school quickly! Gates and doors will be locked as soon as the children have entered school and anyone arriving late will need to arrive via the main school Reception and will be marked as late.

Lessons start in school as soon as children are in class so it is vital they arrive on time please!

Many thanks

Rebecca Quinn

### Dates for your Diary

#### September

27th—Harvest Festival

#### October

7th— from 3.30pm—5.00pm  
Family Group Photos

8th—School Photos - Individuals

8th—Year 4 visit to Bridewell Museum

17th—St John's Challenge

25th—Half Term

#### November

4th—Children Return to School

12th—Parents Evening 14th—Parents  
Evening

20th—Flu Vaccinations (Rec—Year 6)

28th /29th—Christmas Shopping  
Event

#### December

9th/10th—EYFS & KS1 Production

11th—Rec—Year 6 Pantomime at the  
Theatre Royal, Norwich

17th—R, 1 & 2 Christmas Party

18th—3 & 4 Christmas Party

19th—5 & 6 Christmas Party

20th—Christmas Jumper Day

20th—Last day of Term

#### January

7th—Children return to school

#### February

3rd -6th—Year 5 Bikeability

17th—21st—Half Term

24th Children Return to School

25th—Rec- Year 6 Class Group  
Photographs

## Swimming

**Year 5** will be swimming every week on **Monday**. Please ensure your child has their swimming kit, including a hat, a towel and a suitable coat to walk to and from Broadland High School for these sessions.



**Please ensure your child is able to remove their own earrings or not wear them to school on Swimming days.**

## Head Boy / Girl and Deputies

I am pleased to inform you that our new Head Boy, Head Girl and their Deputies have been chosen for the academic year. The new school council will be elected in the coming weeks.

Head Boy—Joel

Head Girl—Ameline

Deputy Head Boy—Archie

Deputy Head Girl—Ava

## Harvest Festival Donations

**Please send any donations into school by Thursday 26th September**

We want to help Norwich Foodbank feed local people in need. Please join with us by giving food so that those less fortunate don't go hungry.

Any in-date non-perishable item would be appreciated and used.

Thank you in advance.



# House Points

| Date     | Bader | Cavell | Nelson | Sewell |
|----------|-------|--------|--------|--------|
| 13.09.24 | 137   | 171    | 114    | 96     |
| 20.09.24 | 114   | 193    | 105    | 123    |
|          |       |        |        |        |
|          |       |        |        |        |
|          |       |        |        |        |
|          |       |        |        |        |
|          |       |        |        |        |

## Class Attendance

16th—20th September

|           |        |
|-----------|--------|
| Reception | 94.07% |
| Year 1    | 96.18% |
| Year 2    | 96.70% |
| Year 3    | 95.94% |
| Year 4    | 98.41% |
| Year 5    | 94.63% |
| Year 6    | 91.18% |

## Absences

### First and Second Day

- Parents are expected to inform the school by phoning 01603 782520 to leave a message on the Pupil Absence line by 9.00am

### Third and Subsequent Days Absence

- Appropriate follow up phone call to update, you may be asked to provide a Doctors note

### Unexplained and Holiday Absence

- Any pupil who is absent without an explanation or takes term time holiday for 9 consecutive sessions will be referred to the Local Authority for action to be considered, This could result in a fixed penalty notice.

## BAG 2 SCHOOL FREE FUNDRAISING FOR SCHOOLS

In partnership with your school or organisation

### St.John's Community Primary School & Nursery



Bag 2 School is a company that specialises in the reuse and recycling of good quality second-hand clothing and we have arranged to make a collection from your school. All the bags will be weighed and you will be paid for the total weight collected. Remember, the more you collect the greater the benefit to your school.



By using this paper leaflet we are helping to reduce unnecessary extra plastic. Please use your own bag or bags (there is no limit). The leaflet is FSC accredited, please recycle it.

When the clothes have been removed from the bag the plastic will be packed and sent for recycling.

*We are collecting good quality items for RE-USE:*

**Men's, ladies' & children's clothing, paired shoes, handbags, belts & accessories.**

*(No uniforms, workwear, pillows, duvets or pieces of fabric please)*

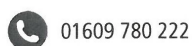
***The more we weigh the more we pay!***

*Extra bags are welcome - there's no limit*

***Please return your Bag2School on:***



**Tuesday 8 October 2024 by 9am**



## Family Group Photographs

We have arranged for our school photographer from Tempest Photography to return to school on **Monday 7th October from 3.30pm - 5.00pm** for you to have Family

Group photographs taken. These photographs can then include older and younger siblings who do not attend our school. There is no need to book, just turn up on the day between the times above.

Please note that while the school is happy to facilitate this photography, it is essentially an arrangement between the photographer and you as a parent.

The school does not hold the negatives or the copyright and is not responsible for your orders, or the future use of the pictures.

## Portrait Photographs

On **Tuesday 8th October** professional photographers from 'Tempest Photography' will be coming into school to take individual pictures of the children. Class photographs will be taken in the summer term. Staff from 'Tempest Photography' regularly work in other schools and we are happy to provide facilities in the usual way.

If you do not wish your child to be photographed, please contact the school before the photography takes place. Otherwise, the photographer will send proofs home with children and you will be able to decide whether or not to place an order.



## Forest Schools—Rota

Alternate Tuesdays - Year 1 - Starting 10<sup>th</sup> September

Alternate Tuesdays - Year 2 - Starting 17<sup>th</sup> September

Wednesdays - Nursery and Reception Class every week

Thursdays - Year 3—Starting 6th November (3 weeks)

Year 4—Starting 27th November (3 Weeks)

Year 5—Starting 15th January 2025 (3 Weeks)

Year 6—Starting 29th January 2025 (3 Weeks)

Please send your child to school in old clothes (long sleeves & long trousers) on Forest School days. Can they also bring waterproofs including coat, hat, gloves (if weather is cold) and wellies in school for these sessions.

There will be no Forest School from 9<sup>th</sup> —20th December to allow for Christmas parties and EYFS/KS1 production



# INTRODUCING CASHPOT FOR SCHOOLS

Download and opt-in with Asda Rewards  
and we will donate **££s** to schools.

**CASHPOT  
FOR  
SCHOOLS**



## HERE'S HOW

- 1** Download the Asda Rewards app & sign up today
- 2** Opt-in to Cashpot for Schools and follow the steps in your app
- 3** Shop, scan and we donate

With  
**Parentkind**



Selected stores. Minimum spend £2+. Exclusions apply including Asda Express & George.com. Subject to availability. UK 18+. App & Opt in required. 0.5% of the value of a customer's eligible shop is donated. Publicly funded primary schools, must register with Parentkind charity 1072833. Full T&C's at [asda.com/cashpotforschools](https://asda.com/cashpotforschools). Rewards T&Cs at [asda.com/rewards/terms](https://asda.com/rewards/terms). Ends 30.11.24